

Scott E. Bennett, P.E.

Director of Highways and Transportation



FHWA DFS South Leadership Meeting

Wednesday, April 19, 2017



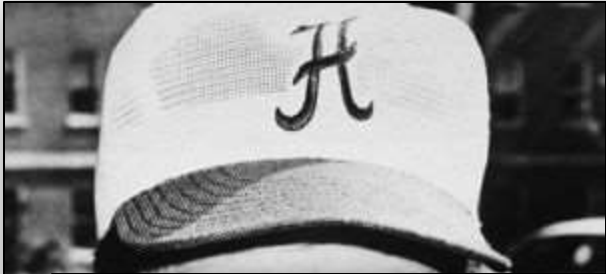
Welcome!

A large white outline of the state of Arkansas is centered on a black background. Inside the outline, the text "Arkansas" is written in a large, black, serif font. A small green leaf icon is positioned above the letter 'k'. Below "Arkansas" is the text "THE NATURAL STATE" in a smaller, green, sans-serif font. A registered trademark symbol (®) is located to the right of the word "Arkansas".

Arkansas[®]
THE NATURAL STATE



Famous Arkansans



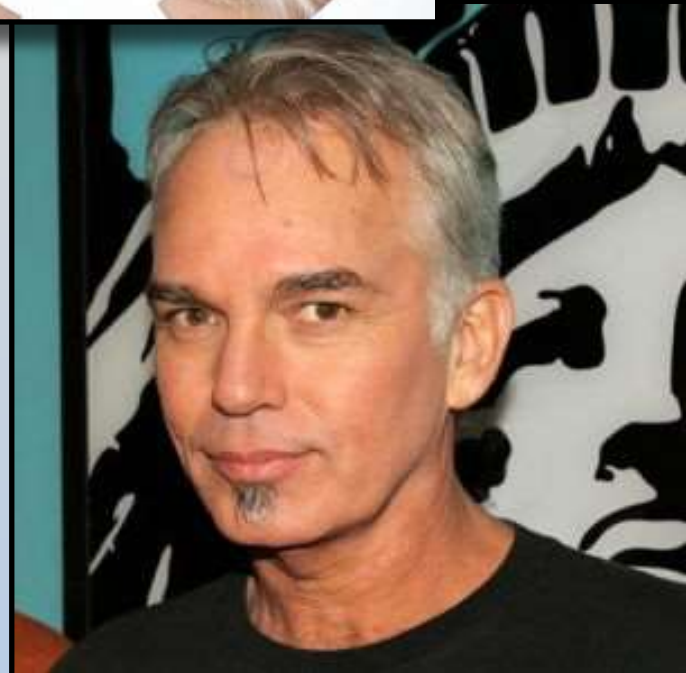
“I don’t want ordinary people, I want people who are willing to sacrifice and do without a lot of those things ordinary students get to do. That’s what it takes to win.”

“I like to start the day early, it keeps me out of trouble.”

“[Writing] was more difficult than laying asphalt, and at times more frustrating than selling underwear. But it paid off. Eventually...”



Famous Arkansans



Arkansas' Businesses



Walmart 



 **J.B. HUNT**




MURPHY
OIL CORPORATION



Settle Down Somewhere...

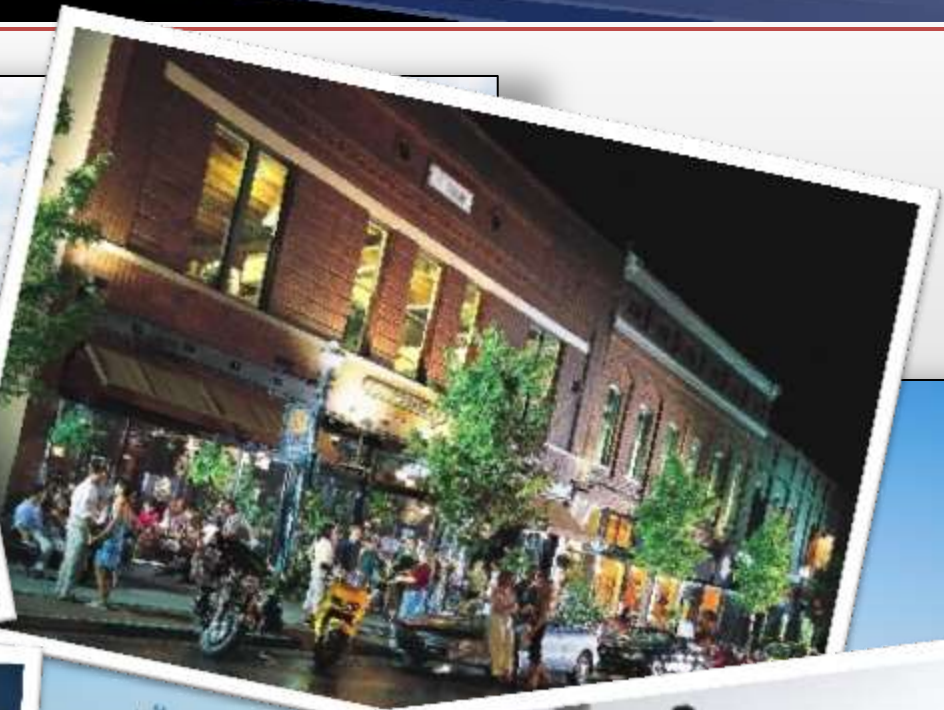
We have plenty of unique towns to choose from...

- Hogeye
- Ben Hur
- Possum Grape
- Strawberry
- Tomato
- Pickles Gap
- Toad Suck
- Goobertown
- Hollywood
- Greasy Corner
- Ink
- Turkey Scratch
- Bald Knob
- Smackover
- Locust Bayou
- Beverage Town
- Nimrod
- Crumrod
- Fifty-Six
- Number Nine
- "Y" City
- Paris
- London
- Egypt
- Romance
- Rob Roy





Central Arkansas





Central Arkansas



Main Street Bridge



Junction Bridge



Clinton Presidential Park Bridge



Only in Arkansas...



Clinton Presidential Center



Bathhouse Row, Hot Springs



Crater of Diamonds State Park



Only in Arkansas...



**Buffalo National River
America's 1st National River**

**Crystal Bridges
Museum of American Art**





Only in Arkansas...



**University of
Arkansas**

Razorbacks

**45 National
Championships**

Arkansas Highway

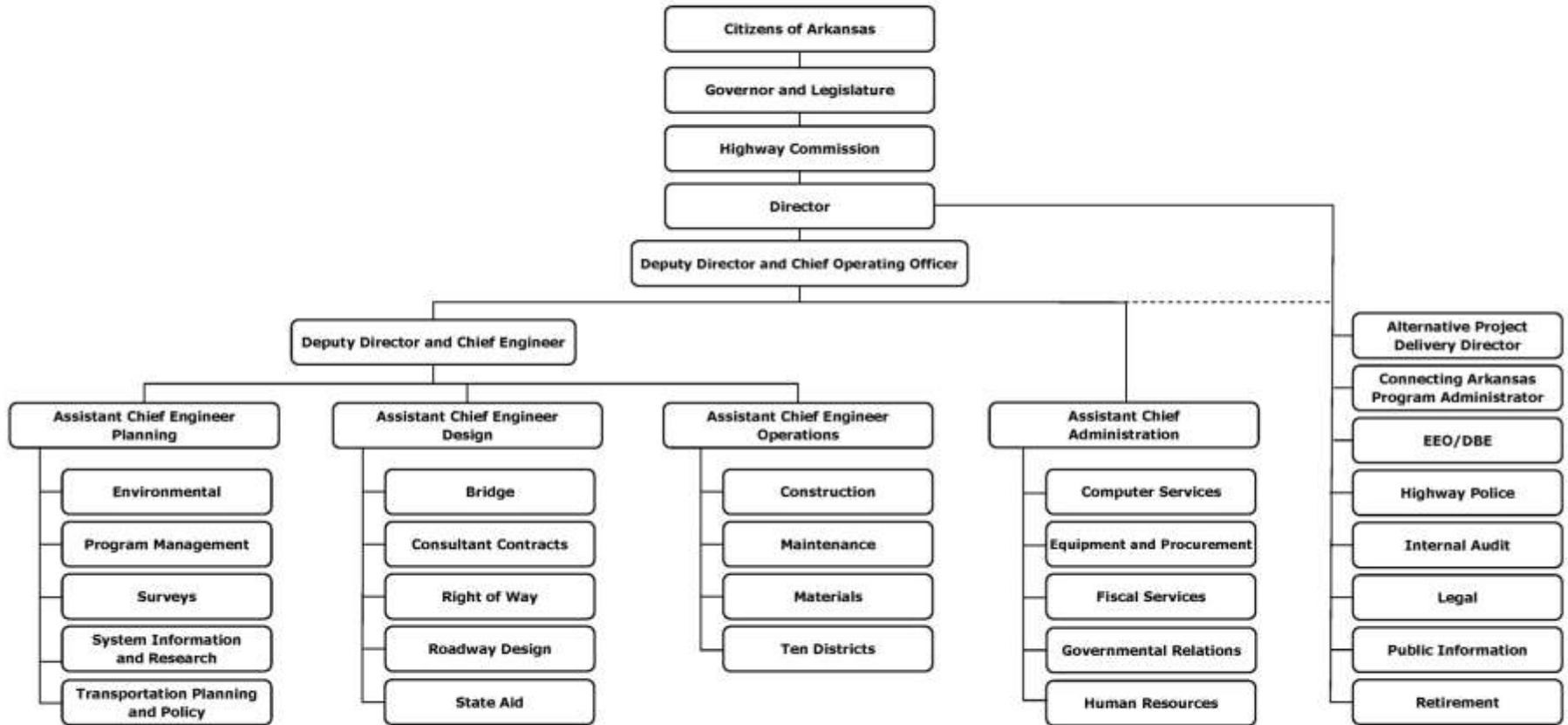


Transportation Department



Organizational Chart

ARKANSAS STATE HIGHWAY AND TRANSPORTATION DEPARTMENT ORGANIZATION CHART



Director of Highways and Transportation

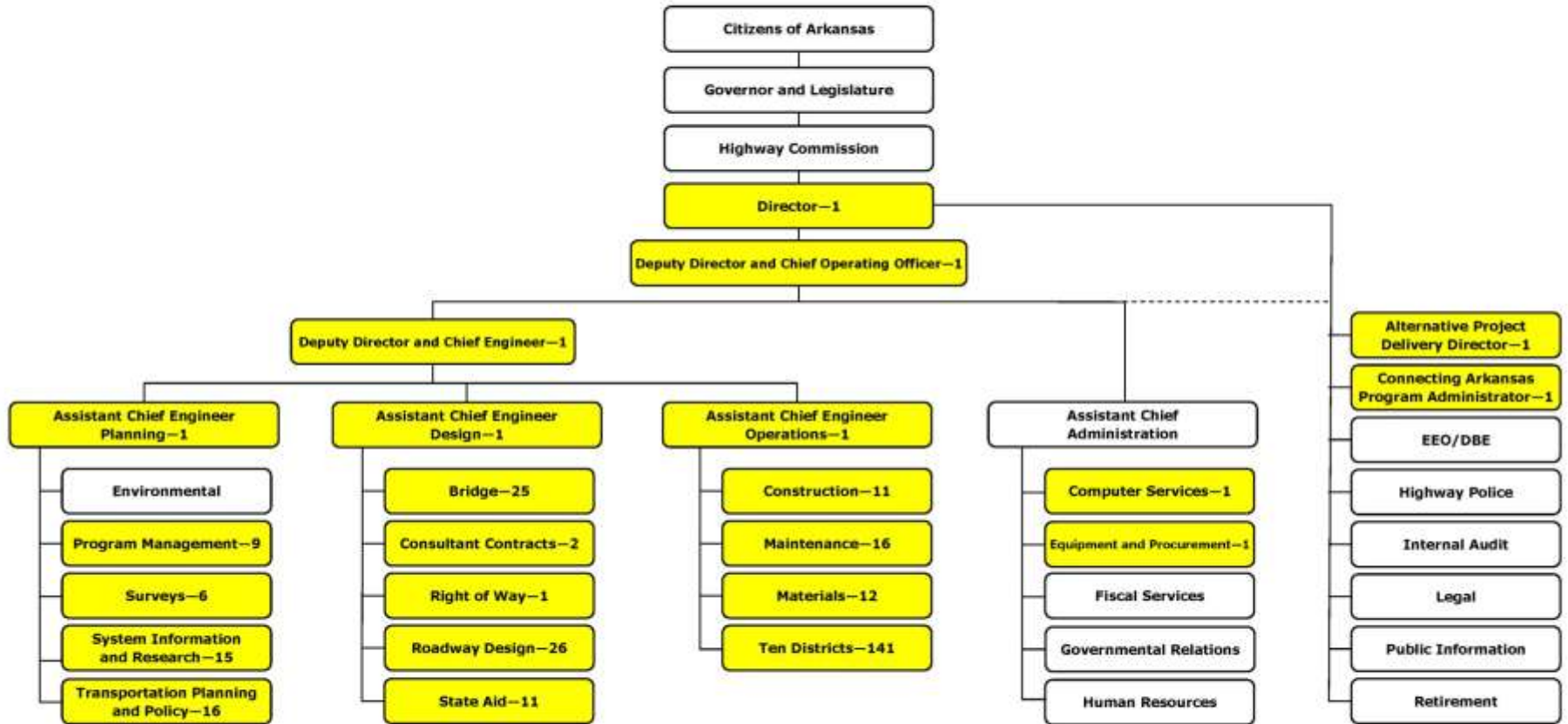
April 11, 2017

Date



Engineer Staff

ARKANSAS STATE HIGHWAY AND TRANSPORTATION DEPARTMENT ORGANIZATION CHART



**DISTRIBUTION OF AHTD ENGINEERS
AS OF 4-11-2017
301**

Scott L. Bennett

Director of Highways and Transportation

April 11, 2017

Date

Arkansas Highway



Commission



Prior to 1913

“We are always yapping about the ‘Good Old Days’ and how we look away back and enjoy it, but I tell you there is a lot of hoey to it.”

– Will Rogers



<http://rustlingsinthewind.blogspot.com>



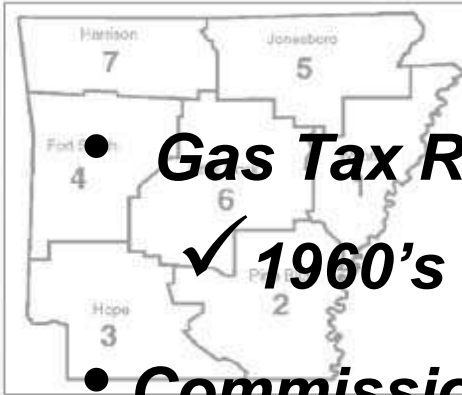
The Teens

- ***First Commission Created***
 - ✓ ***No Highway Department***
 - ✓ ***No Highway System***
- ***\$72,000 Total Budget***
- ***36,000 Miles of Public Roads***

Highway 71 near Bella Vista



The Thirties and Forties



- **Gas Tax Raised to 6.5 cents per Gallon**
✓ **1960's Before Next Increase**
- **Commission Structure Changed Two More Times**



Magnet Truck, Picked up
an average of 100 lbs
metal per mile

- **9,700 Highway Miles (4,900 Paved)**

State Highway Department HQ, 1939

- **Commission Structure Changed Two More Times**
- **Too much Political Influence on Highways**
– **Growing Discontent**





The Fifties



- **1951 - Highway Audit Commission Report**

- ✓ **“the advice, counsel and expert know-how which is available from the Department’s own technical and administrative staffs has scant weight indeed when they are in conflict with the political pressures and political promises of the moment.”**

- **9 Legislative Acts Restructured Commission since 1913**
- **1952 – Mack Blackwell Amendment**

Widening Hwy 67 near
Malvern, 1956





The Sixties and Seventies

- ***No changes to Commission Structure***
- ***Department became Debt Free***



- ***Legislature transferred nearly 4,400 more miles of County Roads to Highway System***

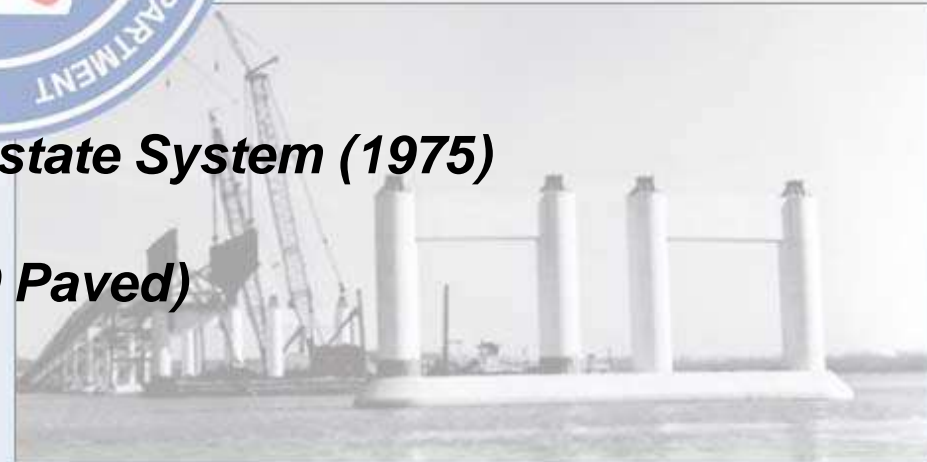
South Terminal, Lawrence Blackwell burning bonds at a ceremony in 1975.

- ***Department adds "Transportation" to its name – Authority Expanded***

- ***1st State to Complete its Interstate System (1975)***
- ***16,000 Highway Miles (15,000 Paved)***



Toad Suck Ferry on Arkansas River at Highway 60, 1970



I-430 River Bridge, 1973



The Eighties and Nineties

- **1985 – Rural Road Program – out of the mud**
- **Early Retirements – huge workforce turnover**
- **1991 – Highway Improvement Program**
- **1993 – Last Federal Gas Tax Increase**



Section of Hwy 7
named first Scenic
Byway of Arkansas.

- **1999 – Last State Gas Tax Increase**

1991 Highway Improvement Program authorized to improve or replace approximately 560 bridges.

- **1999 – Interstate Rehabilitation Program – First Highway Bond Issue in 50 years**

- **I-540 (now I-49) and I-530 Completed**

- **16,400 Highway Miles**

Hopper Tunnel, 1999





The New Millennium



- **2011 – 2nd Interstate Rehabilitation Program**
- **2012 – Connecting Arkansas Program**



Winter Weather in Dec 2000 and Jan 2001 cost almost \$40 M.

- **Governor's Working Group on Highway Funding**

- **16,400 miles State Highways**



New White River Bridge on Hwy 64 at Augusta opened in 2001.





Arkansas Highway Commission



Dick Trammel



Tom Schueck



Robert Moore



Alec Farmer



Philip Taldo

Broadway Bridge





Broadway Bridge



Let to Contract in 1920

Completed in 1923

World War I Memorial

Cost: \$971,000

25,000 ADT





Broadway Bridge





Broadway Bridge





Broadway Bridge



Scott Bennett @AHTDScott · 24h
1970s arch. 1970s hard hat. After 10:00 only the hard hat will remain. Hopefully!
#implosion #I'mpushingthebutton!



4 9



Jeff Wardlaw @JeffWardlaw2814 · 20h
@AHTDScott how did that workout?

4



Scott Bennett
@AHTDScott



Following

@JeffWardlaw2814 About as well as the blasts did!

2:28 PM - 11 Oct 2016

4



Replied to by AHTD
2 hours ago

"@jcauley501 Tempting, but we've got a firm stance against child-labor. :)"



Jason Cauley @jcauley501
2 hours ago

@AHTD I have a 7 year old that'll have that thing down by sunset...



1



5



Hide Conversation



AHTD Well, that didn't go quite as planned.... #BroadwayBridge #TheDayTheBridgeStoodStill

3h





Broadway Bridge



Lisa Neihouse @aromaticselixir
2 hours ago

@AHTD

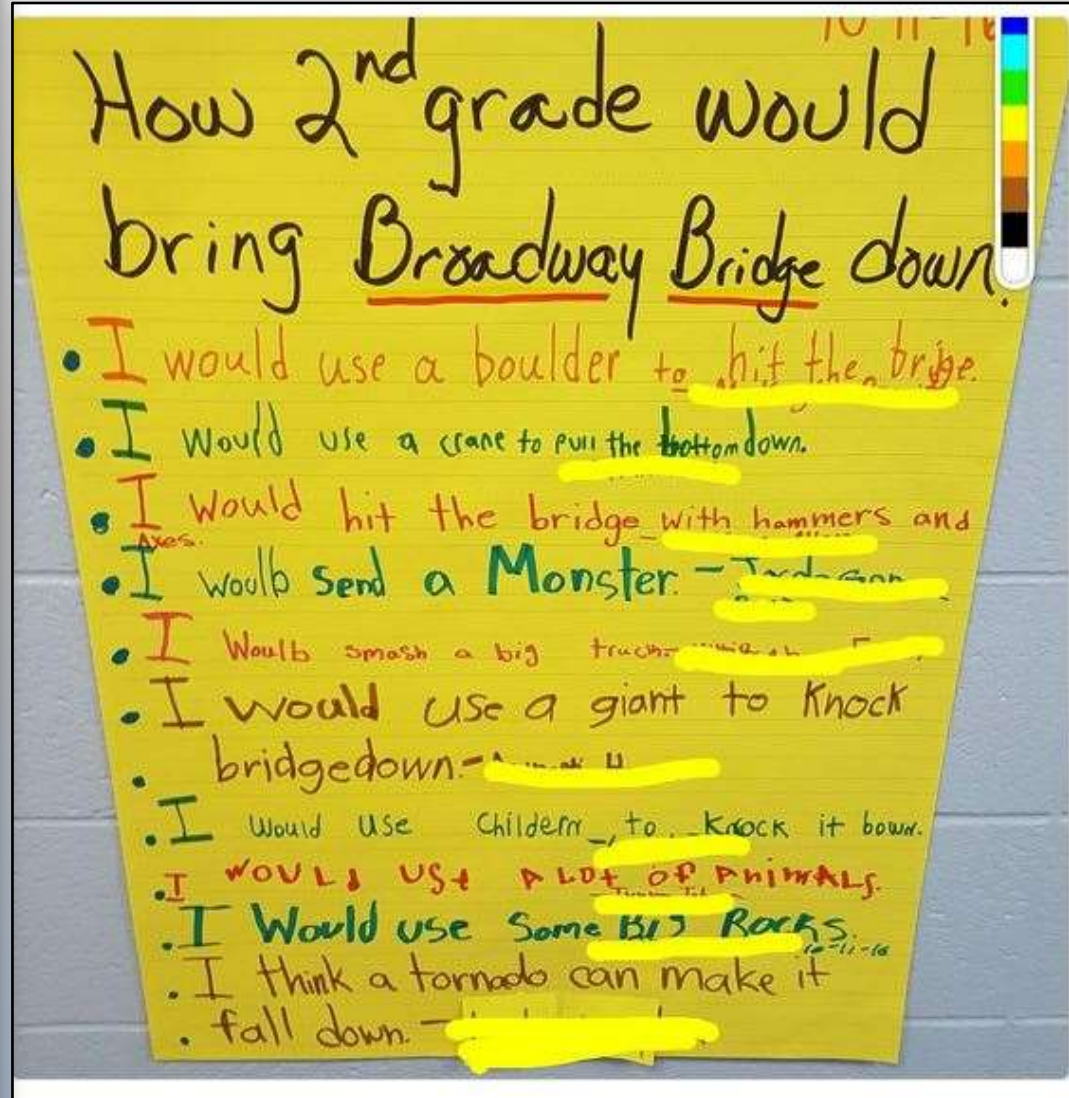


Hide Conversation



AHTD Well, that didn't go quite as planned.... #BroadwayBridge #TheDayTheBridgeStoodStill

3h



How 2nd grade would bring Broadway Bridge down.

- I would use a boulder to hit the bridge.
- I would use a crane to pull the bottom down.
- I would hit the bridge with hammers and axes.
- I would send a Monster.
- I would smash a big truck.
- I would use a giant to knock bridge down.
- I would use children to knock it down.
- I would use a lot of animals.
- I would use some big rocks.
- I think a tornado can make it fall down.

Broadway Bridge



UCAsports.com @ucasports

3 hours ago

Hey @AHTD, if you needed the #BroadwayBridge blown up properly, shoulda given the @UCA_Football defense a holler



10



22



Sylvia @SWB253

3 hours ago

@AHTD @RJHawk she's a tough ole broad!



1



4



Show Conversation



Broadway Bridge





Broadway Bridge





Broadway Bridge



Broadway Bridge





Broadway Bridge





Broadway Bridge



30 Crossing



I-30 Project

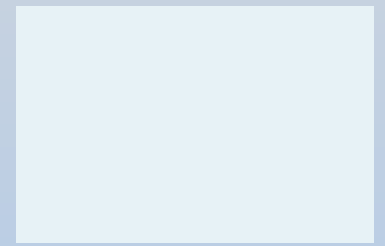
- The 6.7-mile Corridor
- Convergence of Six Major Interstates and Highways
- Major Components



Schedule

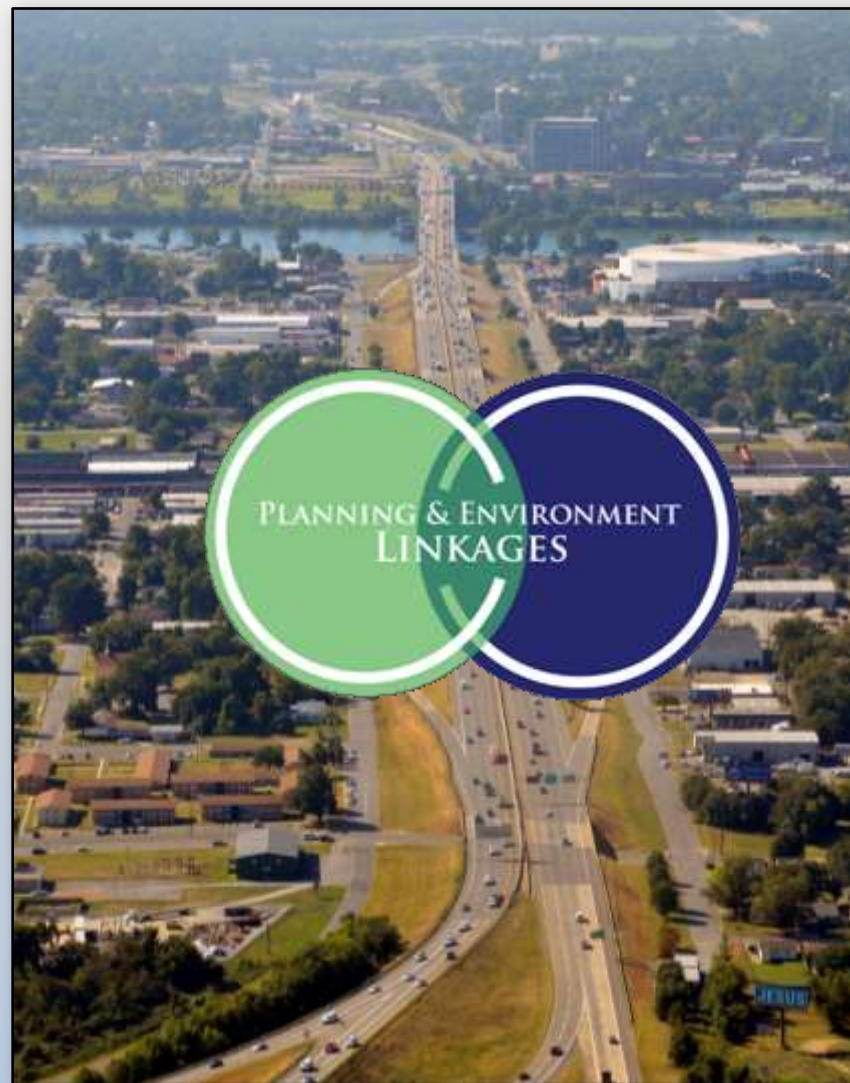


What Makes I-30 Unique?

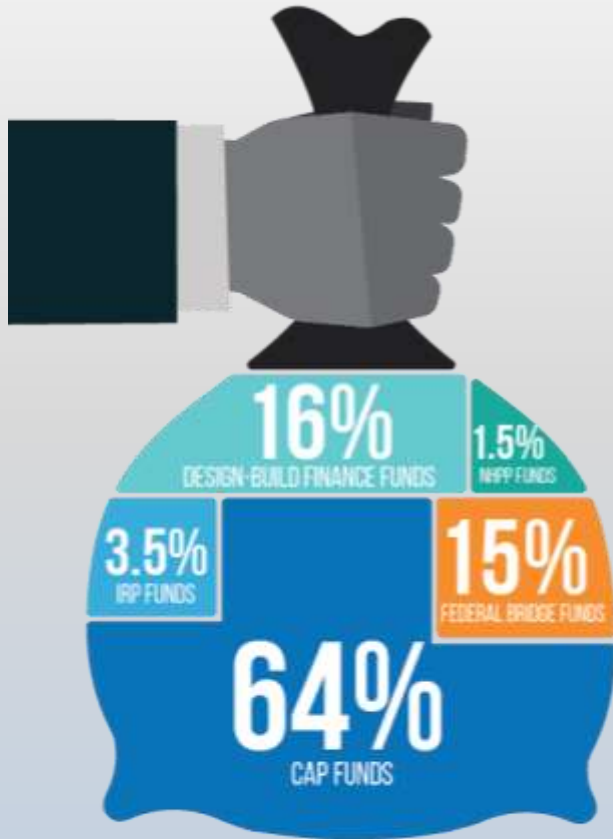


Planning and Environment Linkages (PEL)

- Established by FHWA
- Collaborative and Integrated Approach to Transportation Decision Making
- Benefits
- Timeframe



30 Crossing Funding Sources



64% - Connecting Arkansas Program

15% - Federal Bridge

3.5% - Interstate Rehabilitation Program

1.5% - National Highway Performance Program

16% - Design-Build Finance

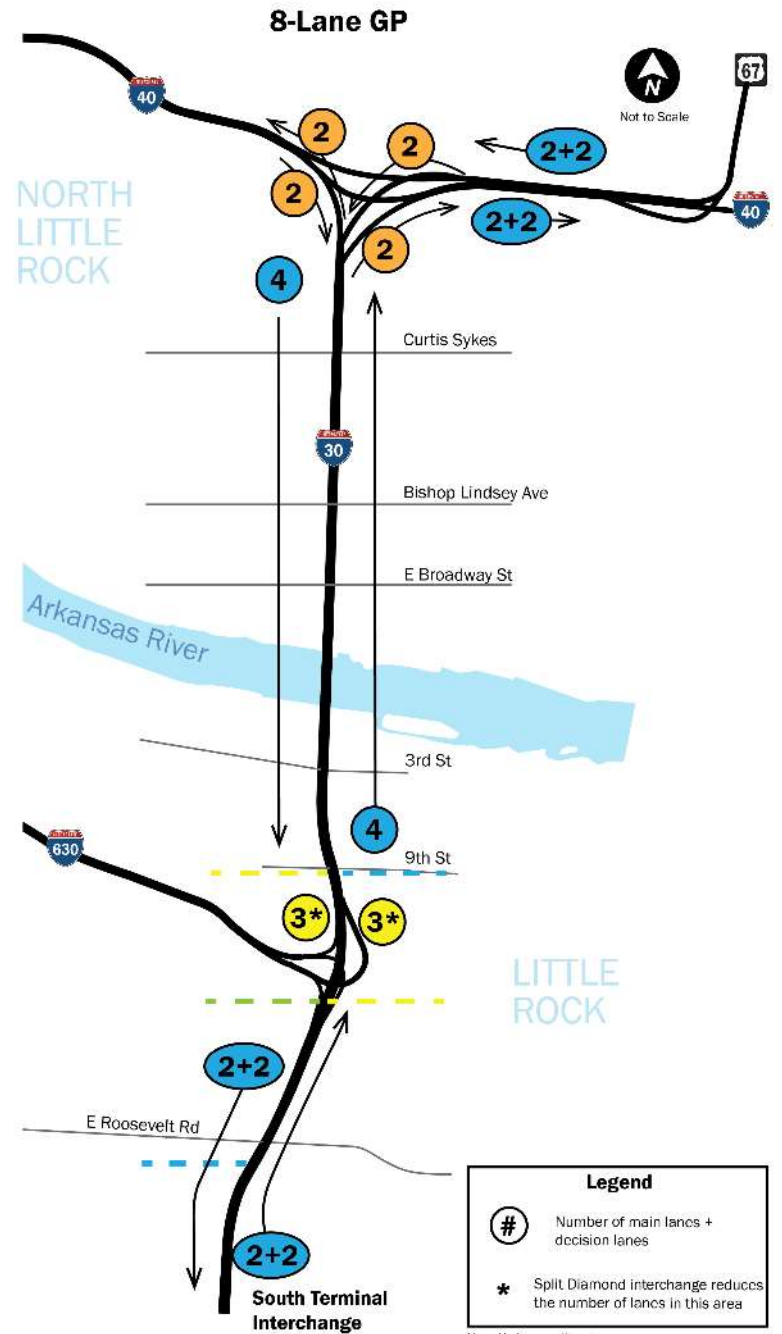


Alternatives

8-Lane

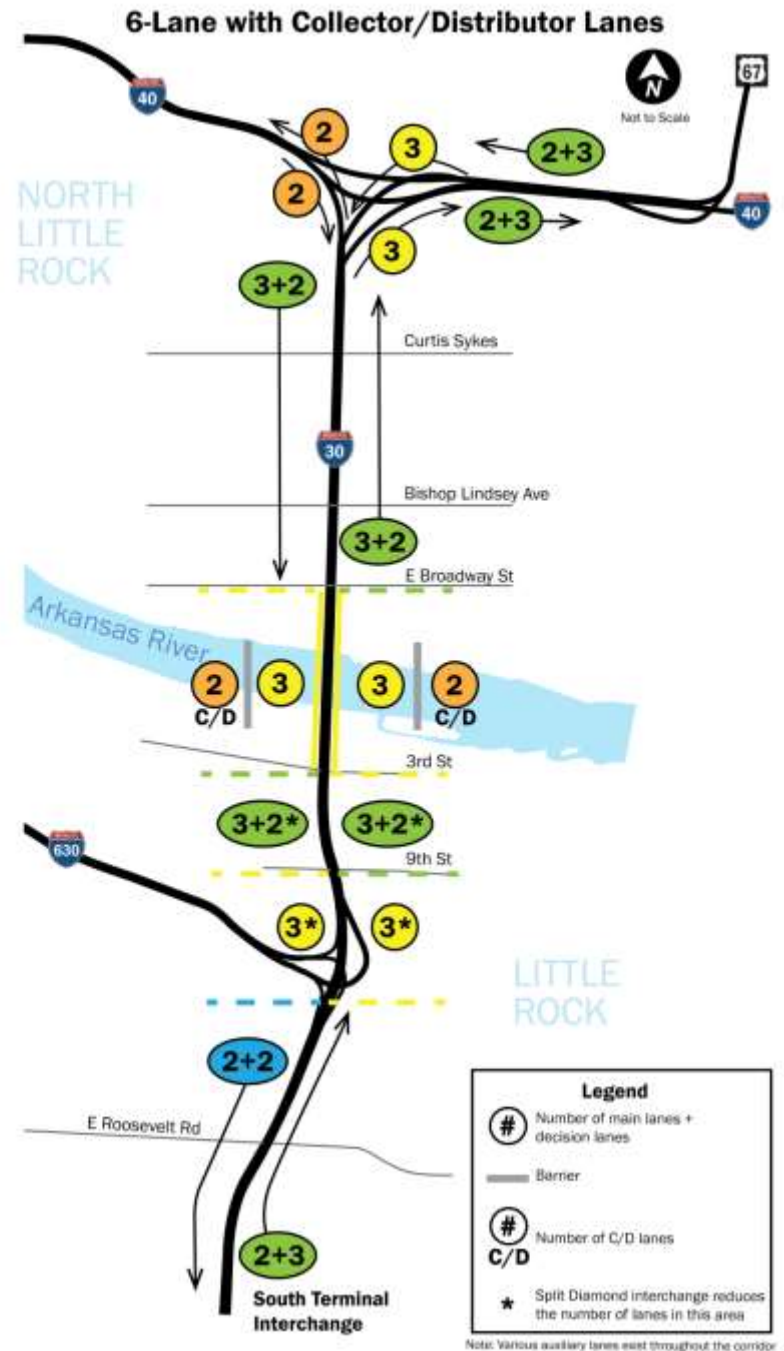
General Purpose

Purpose



Alternatives

6-Lane with Collector Distributor Lanes



Technical Oversight Committee



30
CROSSING

Partners with



The Federal Highway Administration



Partnering with FHWA



U.S. Department of Transportation
**Federal Highway
Administration**





- ArkansasHighways.com
- ConnectingArkansasProgram.com
- Vimeo.com/AHTD
- IDriveArkansas.com
- [Twitter.com @AHTD](https://twitter.com/AHTD)



@AHTD



Questions?

